

STATE WHEN ORDERING

FW = mm
 FH = mm
 COW = mm
 COH = mm
 CL = mm

Surface treatment

☐ Silver anodized
 Special anodized
 RAL
 Special powder coating

Options see layers:

☐ Alternative F (concrete/brick)
☐ Alternative U (aluminium/steel)

Glass option see drw. 1009030

Glass code:

Installation

☐ Floor heating
☐ Other

Note!

Cylinder ordered separately.
 If other cylinder than 1700614 is
 used for two-ways locking, it
 must have following classification
 according to EN 1303.

EN 1303									
Digit	1	2	3	4	5	6	7	8	
Value	-	-	-	-	-	-	-	-	41

Cylinder length:

One-way 27/9 mm
 Two-ways 27/27 mm

Customer:

Ref:

Door id:

Date:

Project No:

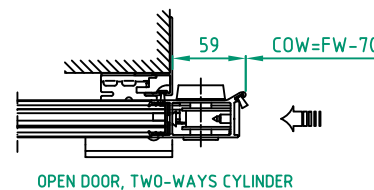
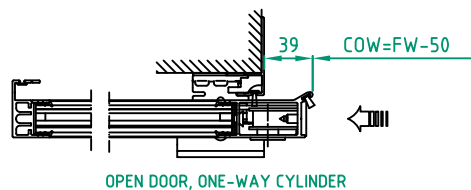
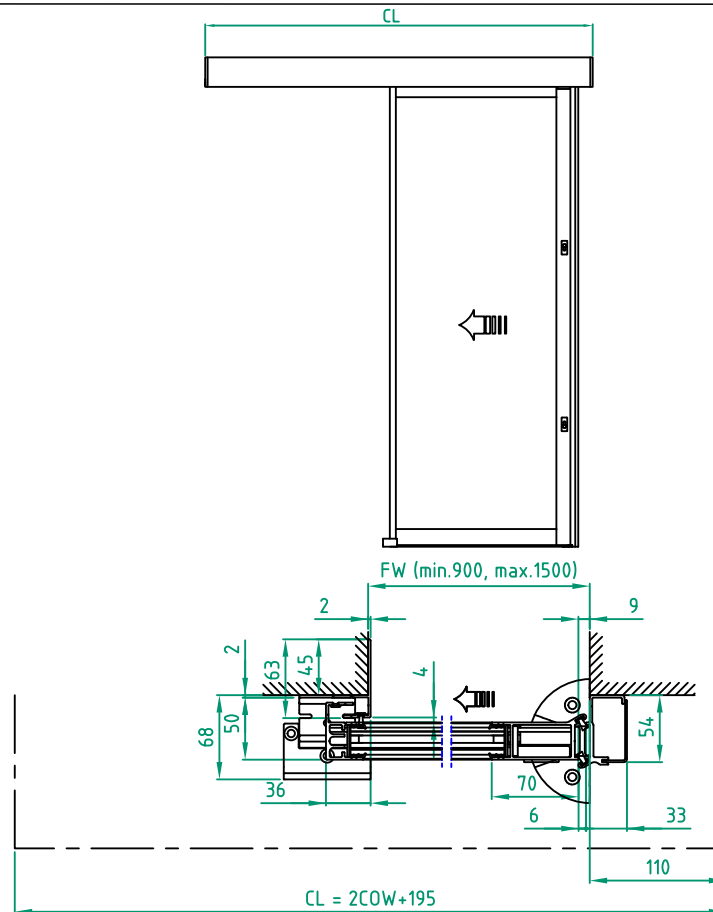
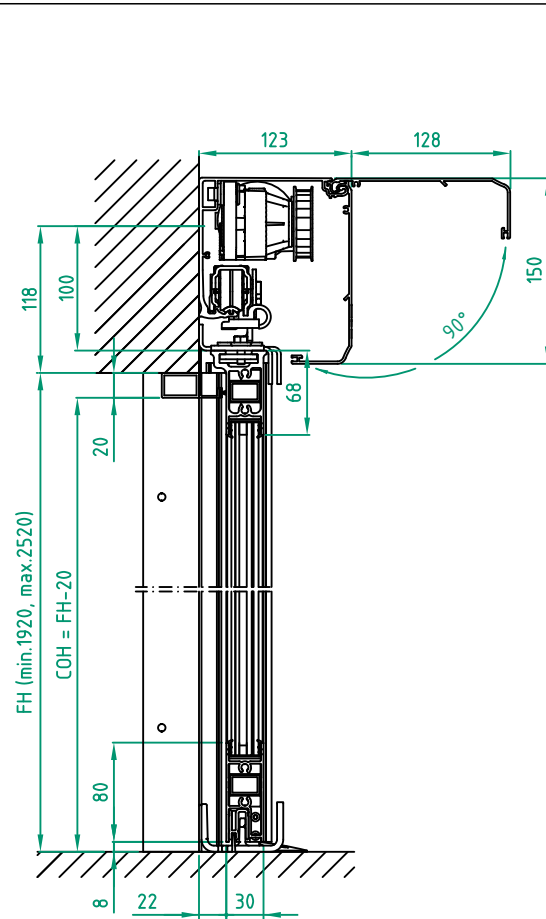
Sign:

Automatic door system
 ASSA ABLOY Slim Eco RC2 2 Panel wall mounted bipart
 Art. No. 1015771-2PB-15
 ASSA ABLOY SL500

ASSA ABLOY

3.0

1015771-EI



STATE WHEN ORDERING

FW = mm
FH = mm
COW = mm
COH = mm
CL = mm

Surface treatment

☐ Silver anodized
☐ Special anodized
☐ RAL
☐ Special powder coating
.....

Options see layers:

☐ Alternative F (concrete/brick)
☐ Alternative U (aluminium/steel)

Glass option see drw. 1009030

Glass code:

Installation

☐ Floor heating
☐ Other

Note!

Cylinder ordered separately.
If other cylinder than 1700614 is
used for two-ways locking, it
must have following classification
according to EN 1303.

EN 1303								
Digit	1	2	3	4	5	6	7	8
Value	-	-	-	-	-	-	4	1

Cylinder length:

One-way 27/9 mm
Two-ways 27/27 mm

Customer:

Ref:

Door id:

Date:

Project No:

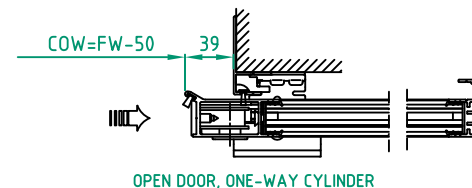
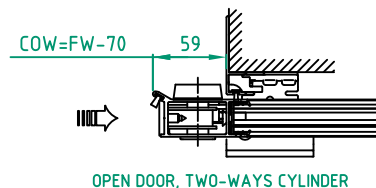
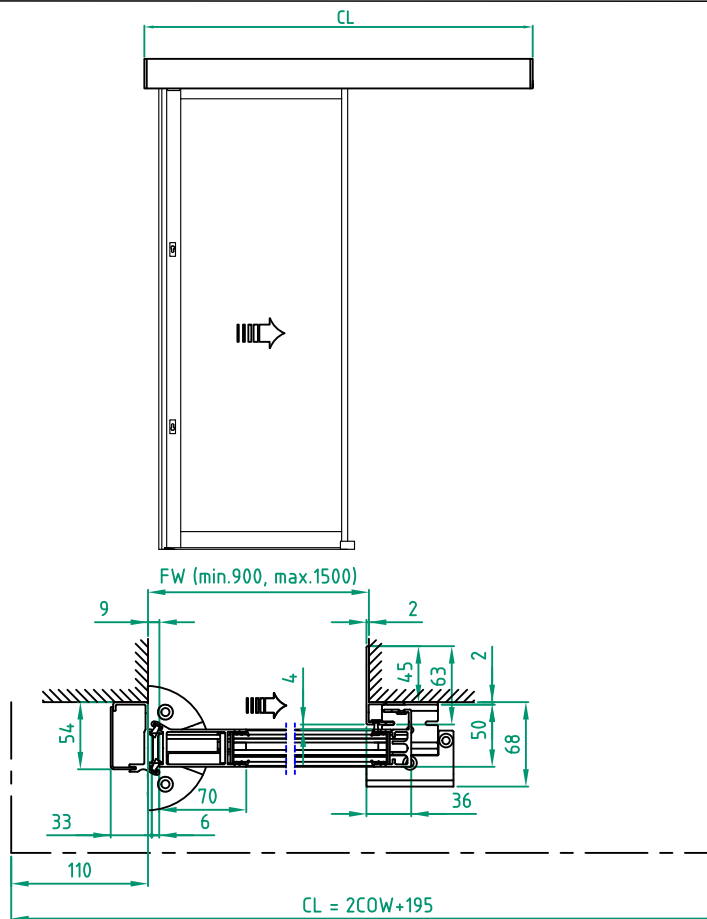
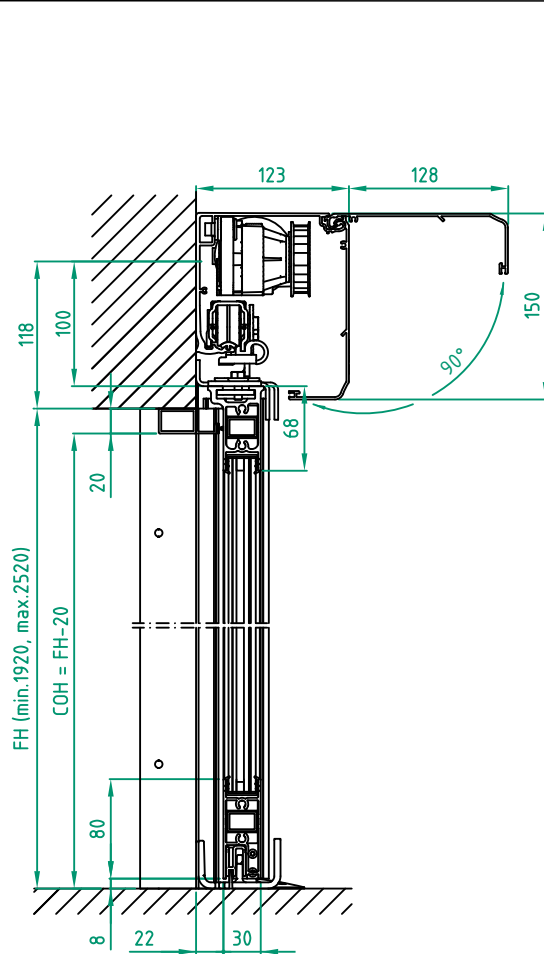
Sign:

Automatic door system
ASSA ABLOY Slim Eco RC2 1 Panel wall mounted left opening
Art. No. 1015771-1PS-15
ASSA ABLOY SL500

ASSA ABLOY

3.0

1015771-EI



STATE WHEN ORDERING

FW = mm
FH = mm
COW = mm
COH = mm
CL = mm

Surface treatment

☐ Silver anodized
Special anodized
RAL
Special powder coating
.....

Options see layers:

☐ Alternative F (concrete/brick)
☐ Alternative U (aluminium/steel)

Glass option see drw. 1009030

Glass code:

Installation

☐ Floor heating
☐ Other

Note!

Cylinder ordered separately.
If other cylinder than 1700614 is
used for two-ways locking, it
must have following classification
according to EN 1303.

EN 1303									
Digit	1	2	3	4	5	6	7	8	
Value	-	-	-	-	-	-	-	-	41

Cylinder length:

One-way 27/9 mm
Two-ways 27/27 mm

Customer:

Ref:

Door id:

Date:

Project No:

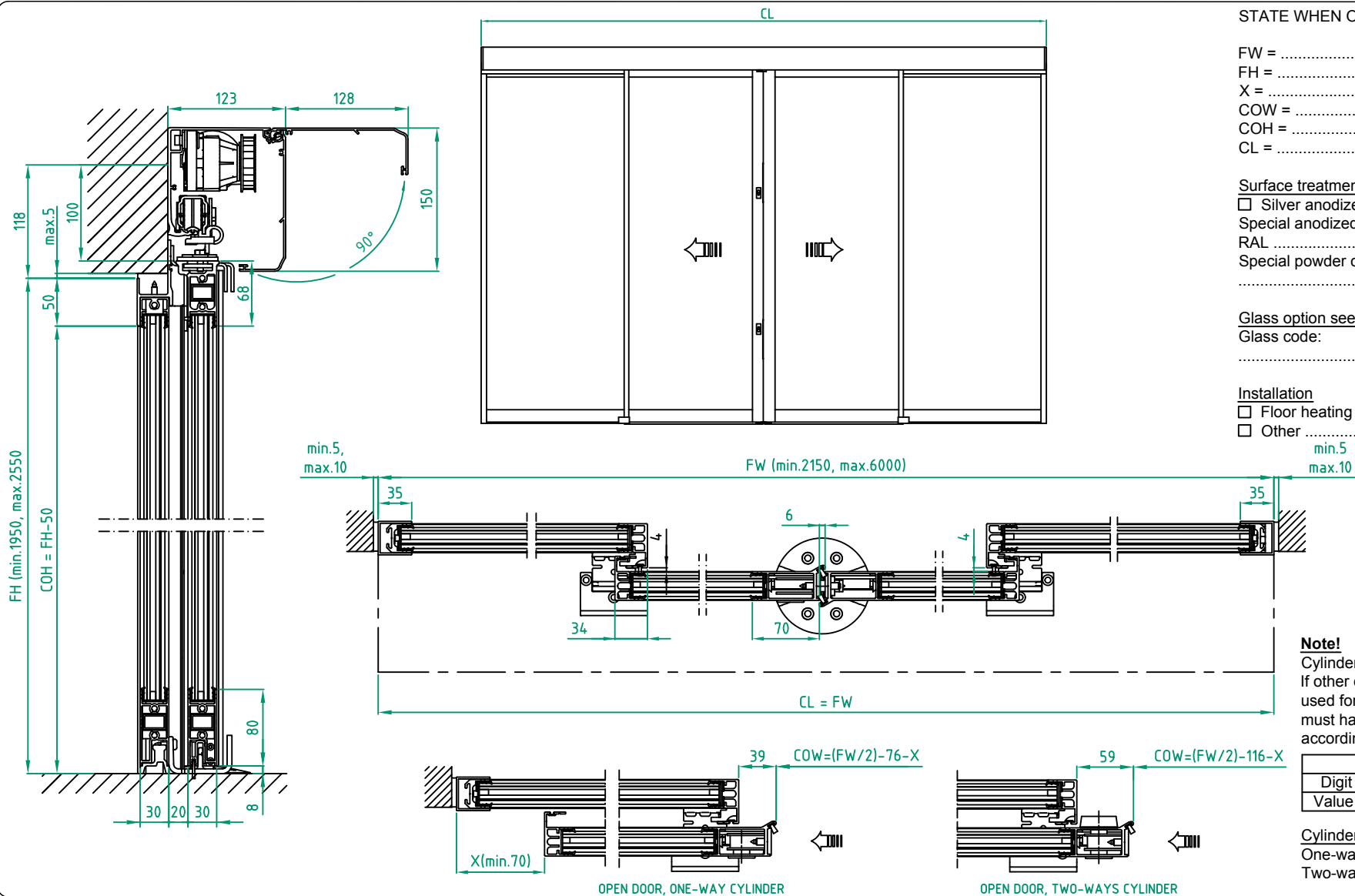
Sign:

Automatic door system
ASSA ABLOY Slim Eco RC2 1 Panel wall mounted right opening
Art. No. 1015771-1PS-15
ASSA ABLOY SL500

ASSA ABLOY

3.0

1015771-EI



STATE WHEN ORDERING

FW = mm
FH = mm
X = mm
COW = mm
COH = mm
CL = mm

Surface treatment

☐ Silver anodized
Special anodized
RAL
Special powder coating

Glass option see drw. 1009030

Glass code:

Installation

☐ Floor heating
☐ Other

Note!

Cylinder ordered separately.
If other cylinder than 1700614 is used for two-ways locking, it must have following classification according to EN 1303.

EN 1303							
Digit	1	2	3	4	5	6	7
Value	-	-	-	-	-	-	4

Cylinder length:

One-way 27/9 mm
Two-ways 27/27 mm

Customer:

Ref:

Door id:

Date:

Project No:

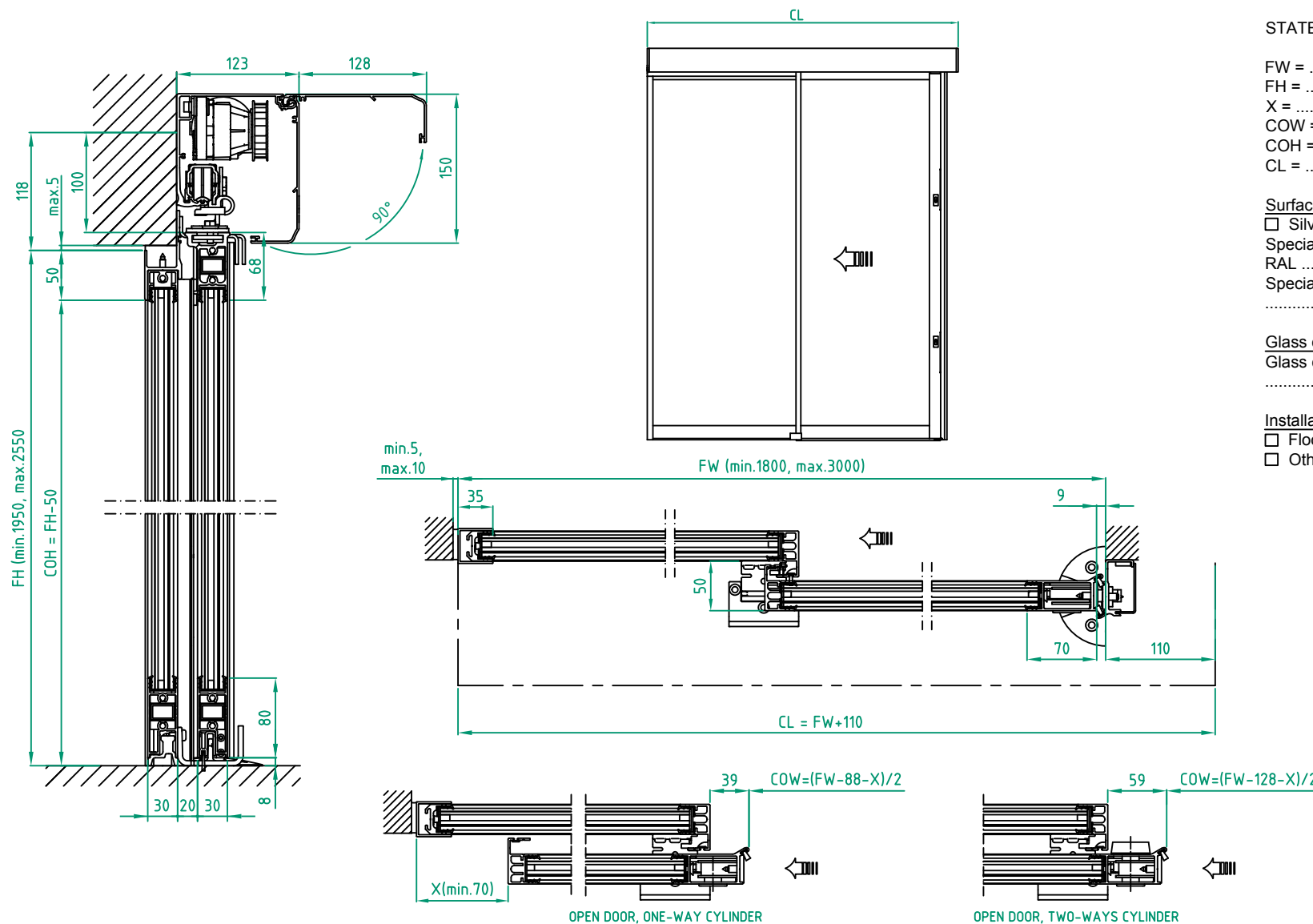
Sign:

Automatic door system
ASSA ABLOY Slim Eco RC2 4 Panel wall mounted bipart
Art. No. 1015771-4PB-15
ASSA ABLOY SL500

ASSA ABLOY

3.0

1015771-EI



STATE WHEN ORDERING

FW = mm
FH = mm
X = mm
COW = mm
COH = mm
CL = mm

Surface treatment

☐ Silver anodized
Special anodized
RAL
Special powder coating
.....

Glass option see drw. 1009030

Glass code:
.....

Installation

☐ Floor heating
☐ Other

Note!

Cylinder ordered separately.
If other cylinder than 1700614 is
used for two-ways locking, it
must have following classification
according to EN 1303.

EN 1303								
Digit	1	2	3	4	5	6	7	8
Value	-	-	-	-	-	-	4	1

Cylinder length:

One-way 27/9 mm
Two-ways 27/27 mm

Customer:

Ref:

Door id:

Date:

Project No:

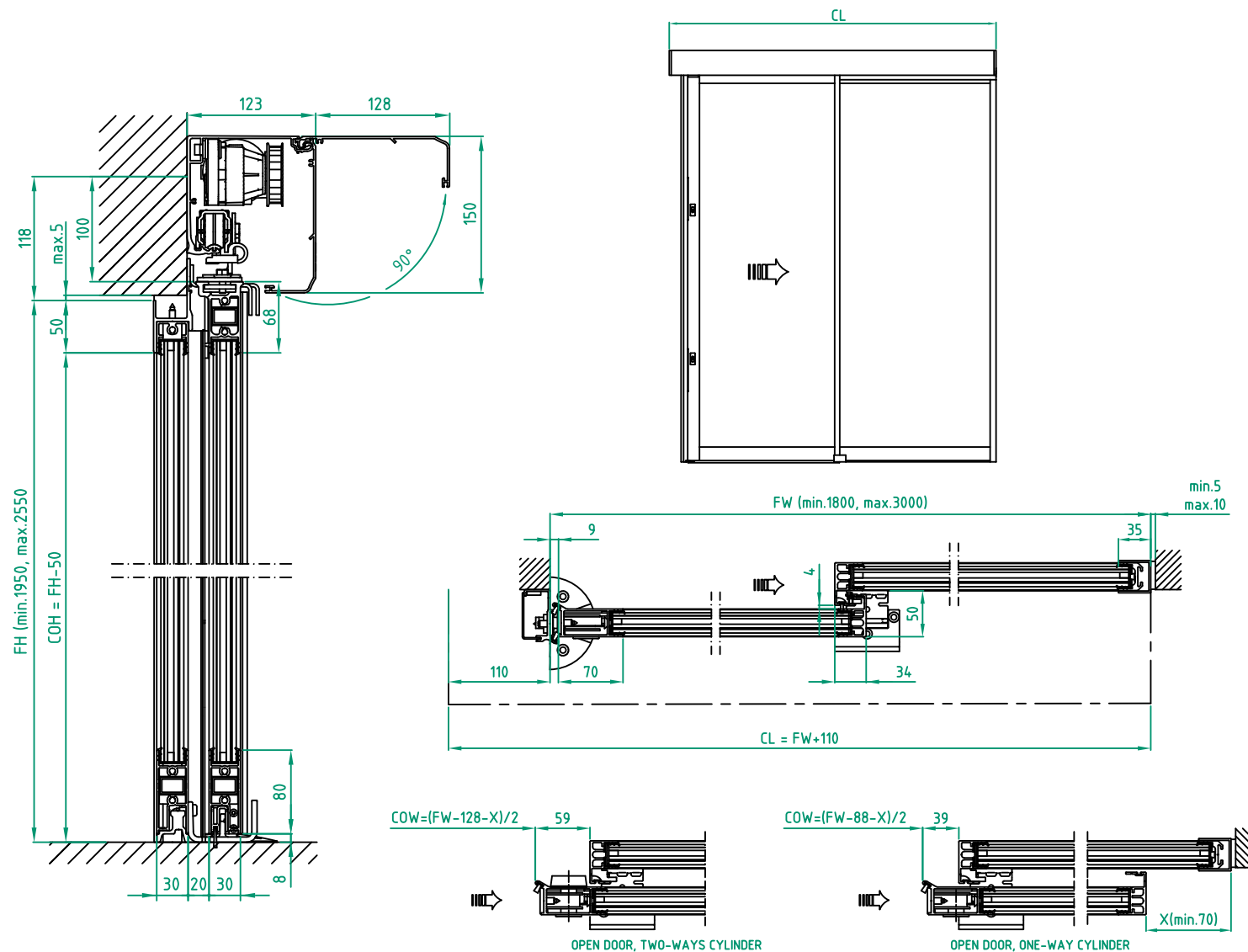
Sign:

Automatic door system
ASSA ABLOY Slim Eco RC2 2 Panel wall mounted left opening
Art. No. 1015771-2PS-15
ASSA ABLOY SL500

ASSA ABLOY

3.0

1015771-EI



STATE WHEN ORDERING

FW = mm
FH = mm
X = mm
COW = mm
COH = mm
CL = mm

Surface treatment

☐ Silver anodized
Special anodized
RAL
Special powder coating
.....

Glass option see drw. 1009030

Glass code:
.....

Installation

☐ Floor heating
☐ Other
.....

Note!

Cylinder ordered separately.
If other cylinder than 1700614 is
used for two-ways locking, it
must have following classification
according to EN 1303.

EN 1303							
Digit	1	2	3	4	5	6	7
Value	-	-	-	-	-	4	1

Cylinder length:

One-way 27/9 mm
Two-ways 27/27 mm

Customer:

Ref:

Door id:

Date:

Project No:

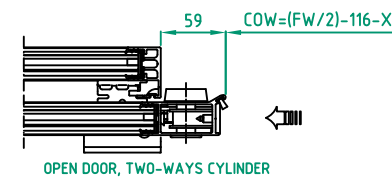
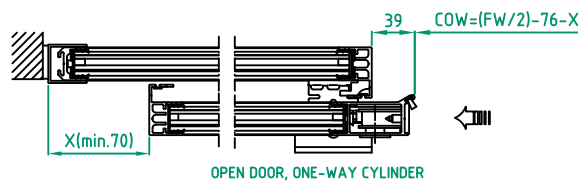
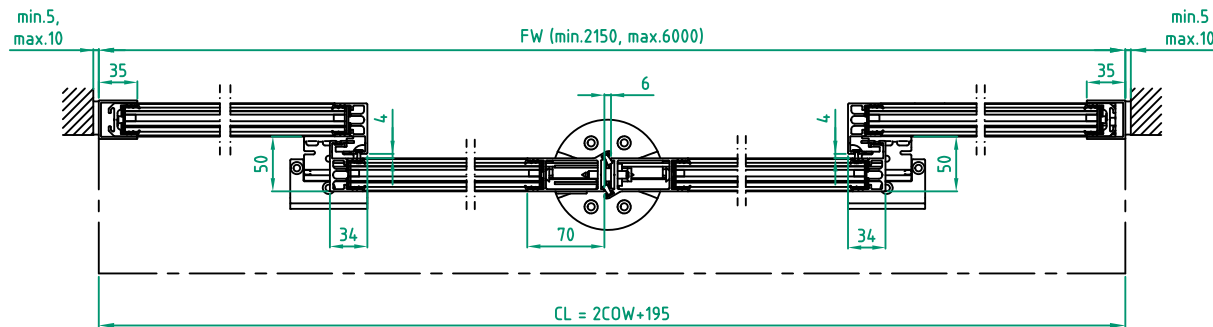
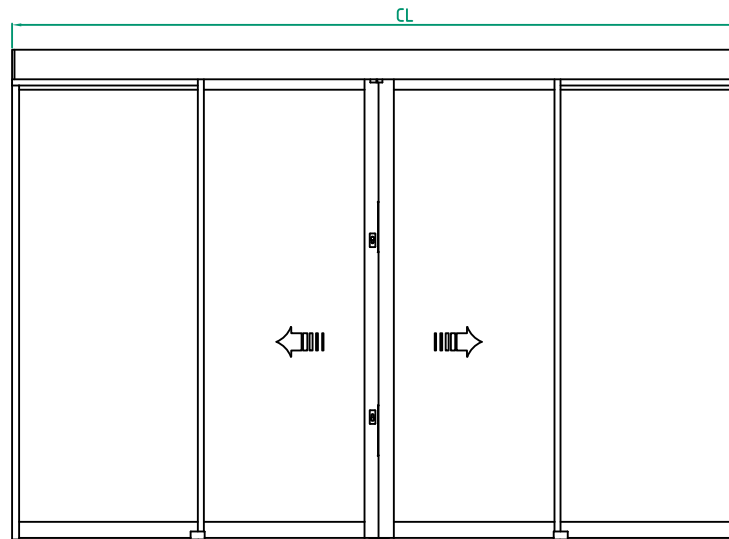
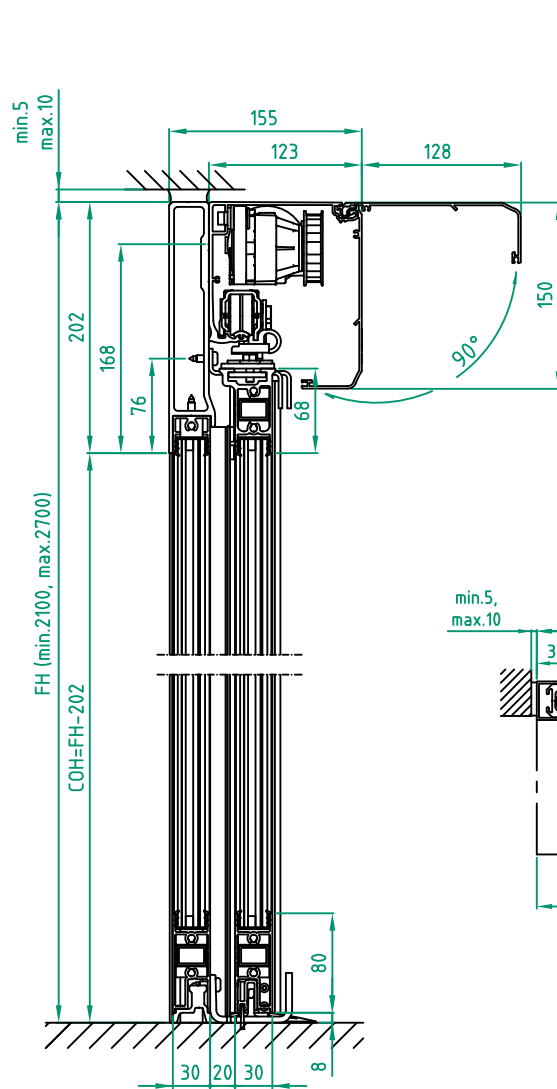
Sign:

Automatic door system
ASSA ABLOY Slim Eco RC2 2 Panel wall mounted right opening
Art. No. 1015771-2PS-15
ASSA ABLOY SL500

ASSA ABLOY

3.0

1015771-EI



STATE WHEN ORDERING

FW = mm
FH = mm
X = mm
COW = mm
COH = mm
CL = mm

Surface treatment

☐ Silver anodized
Special anodized
RAL
Special powder coating

Glass option see drw. 1009030

Glass code:

Installation

☐ Floor heating
☐ Other

Note!

Cylinder ordered separately.
If other cylinder than 1700614 is used for two-ways locking, it must have following classification according to EN 1303.

EN 1303									
Digit	1	2	3	4	5	6	7	8	
Value	-	-	-	-	-	-	-	-	41

Cylinder length:

One-way 27/9 mm
Two-ways 27/27 mm

Customer:

Ref:

Door id:

Date:

Project No:

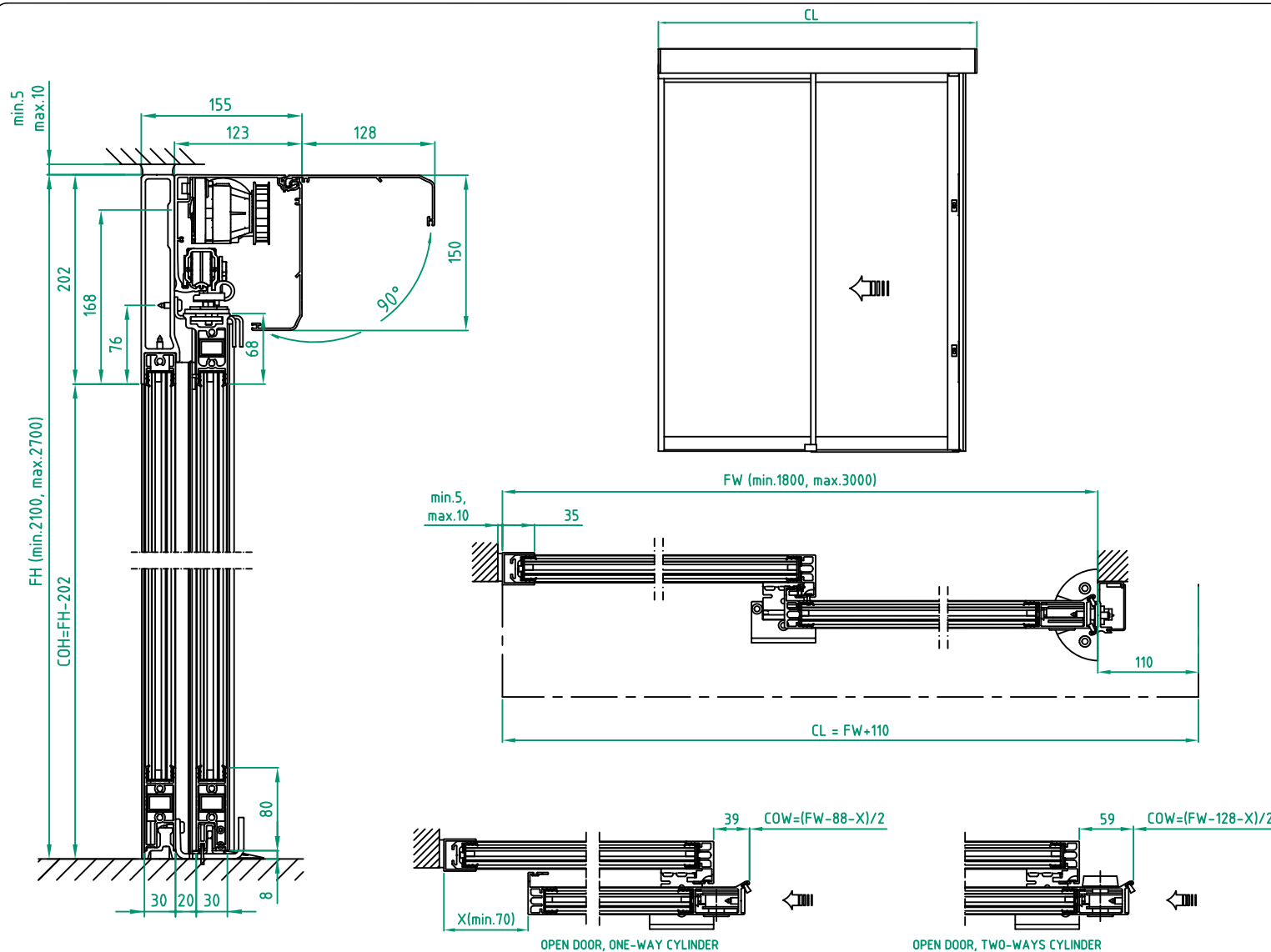
Sign:

Automatic door system
ASSA ABLOY Slim Eco RC2 4 Panel beam mounted bipart
Art. No. 1015771-4PB-15
ASSA ABLOY SL500

ASSA ABLOY

3.0

1015771-EI



STATE WHEN ORDERING

FW = mm
 FH = mm
 X = mm
 COW = mm
 COH = mm
 CL = mm

Surface treatment

☐ Silver anodized
 Special anodized
 RAL
 Special powder coating

Glass option see drw. 1009030

Glass code:

Installation

☐ Floor heating
☐ Other

Note!

Cylinder ordered separately.
 If other cylinder than 1700614 is used for two-ways locking, it must have following classification according to EN 1303.

EN 1303									
Digit	1	2	3	4	5	6	7	8	
Value	-	-	-	-	-	-	-	4	1

Cylinder length:

One-way 27/9 mm

Two-ways 27/27 mm

Customer:

Ref:

Door id:

Date:

Project No:

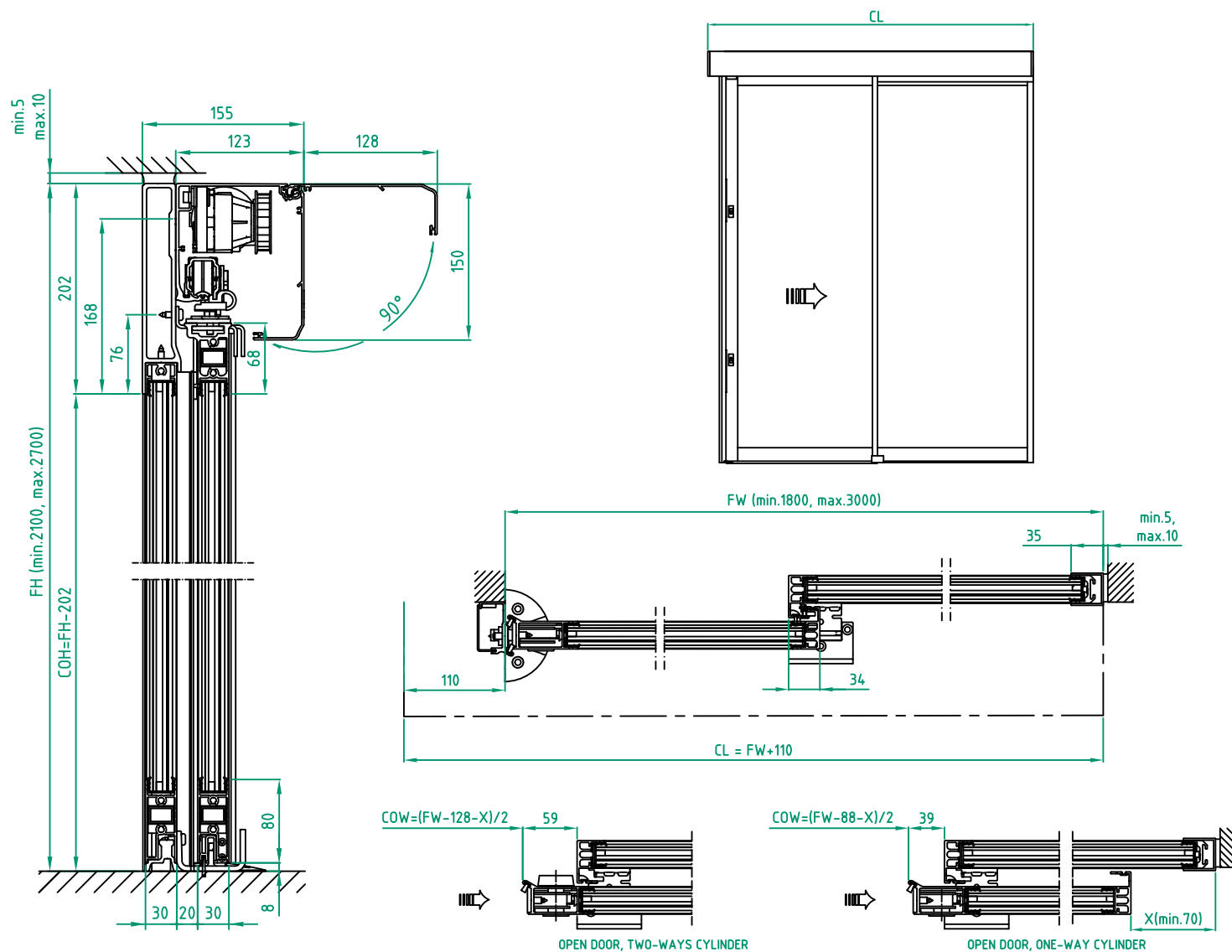
Sign:

Automatic door system
 ASSA ABLOY Slim Eco RC2 2 Panel beam mounted left opening
 Art. No. 1015771-2PS-15
 ASSA ABLOY SL500

ASSA ABLOY

3.0

1015771-EI



STATE WHEN ORDERING

FW = mm
 FH = mm
 X = mm
 COW = mm
 COH = mm
 CL = mm

Surface treatment

☐ Silver anodized
 Special anodized
 RAL
 Special powder coating

Glass option see drw. 1009030

Glass code:

Installation

☐ Floor heating
☐ Other

Note!

Cylinder ordered separately.
 If other cylinder than 1700614 is
 used for two-ways locking, it
 must have following classification
 according to EN 1303.

EN 1303							
Digit	1	2	3	4	5	6	7
Value	-	-	-	-	-	-	4

Cylinder length:

One-way 27/9 mm
 Two-ways 27/27 mm

Customer:

Ref:

Door id:

Date:

Project No:

Sign:

Automatic door system
 ASSA ABLOY Slim Eco RC2 2 Panel beam mounted right opening
 Art. No. 1015771-2PS-15
 ASSA ABLOY SL500

ASSA ABLOY

3.0

1015771-EI